

CERTIFICATE

State of Kansas
Special District
2013

To the Clerk of McPherson County, State of Kansas
We, the undersigned, officers of
Empire Cemetery

certify that: (1) the hearing mentioned in the attached publication was held;
(2) after the Budget Hearing this budget was duly approved and adopted
maximum expenditures for the various funds for the year 2013; and (3) the
Amount(s) of 2012 Ad Valorem Tax are within statutory limitations for the 2013 Budget.

			2013 Adopted Budget		
Table of Contents:			Expenditure	Amount of 2012 Ad Valorem Tax	County Clerk's Use Only
Computation to Determine Limit for 2013		Page No. 2			
Allocation MVT, RVT, 16/20M Veh & Slider		3			
Schedule of Transfers		4			
Statement of Indebt. & Lease/Purchase					
Fund	K.S.A.				
General	0	5	17,000	15,117	1.034
Debt Service	10-113				
Non-Budgeted Funds		6			
Totals		XXXXXXXXXX	17,000	15,117	1.034
Budget Summary		7			
Neighborhood Revitalization Rebate Resolution		8			
			Is a Resolution required?	Yes	

Assisted by: Rick Witte
County Administrator
Address: PO Box 646
McPherson, KS 67460

County Clerk's Use Only
14,615,083
November 1st Total
Assessed Valuation

State Use Only
Received _____
Reviewed by _____
Follow-up: Yes _____ No _____

Attest: 8-25 2012
Cathy Schmidt
County Clerk

X Mark Happer
Linda K Andersen
Doreen V. V. V.

Governing Body

Computation to Determine Limit for 2013

		Amount of Levy
1. Total Tax Levy Amount in 2012 Budget	+ \$	14,928
2. Debt Service Levy in 2012 Budget	- \$	0
3. Tax Levy Excluding Debt Service	\$	14,928
2012 Valuation Information for Valuation Adjustments:		
4. New Improvements for 2012:	+ 118,293	
5. Increase in Personal Property for 2012:		
5a. Personal Property 2012	+ 413,041	
5b. Personal Property 2011	- 405,257	
5c. Increase in Personal Property (5a minus 5b)	+ 7,784	
	(Use Only if > 0)	
6. Valuation of Property that has Changed in Use during 2012:	0	
7. Total Valuation Adjustment (Sum of 4, 5c, 6)	126,077	
8. Total Estimated Valuation July, 1, 2012	14,617,229	
9. Total Valuation less Valuation Adjustment (8 minus 7)	14,491,152	
10. Factor for Increase (7 divided by 9)	0.00870	
11. Amount of Increase (10 times 3)	+ \$ 130	
12. Maximum Tax Levy, excluding debt service, without Resolution (3 plus 11)	\$ 15,058	
13. Debt Service Levy in this 2013 Budget	0	
14. Maximum levy, including debt service, without a Resolution (12 plus 13)	15,058	

If the 2013 budget includes tax levies exceeding the total on line 14, you must adopt a resolution to exceed this limit and attach a copy to this budget.

Empire Cemetery
McPherson County

ALLOCATION OF MOTOR, RECREATIONAL, 16/20M VEHICLE TAXES & SLIDER

2012 Budgeted Funds	Tax Levy Amount in 2011 Budget	Allocation for Year 2013		
		MVT	RVT	Slider
General	14,928	1,556	43	52
Debt Service	0	0	0	0
	0	0	0	0
	0	0	0	0
Total	14,928	1,556	43	52

County Treas MVT Estimate

1,556

County Treas RVT Estimate

43

County Treas 16/20 M Vehicle Tax Estimate

52

County Treas Slider Estimate

0

MVT Factor 0.10423

RVT Factor 0.00288

16/20M Factor 0.00348

Slider Factor 0.00000

2013

Empire Cemetery
McPherson County

Schedule of Transfers

Expenditure Fund Transferred From:	Receipt Fund Transferred To:	Actual Amount for 2011	Current Amount for 2012	Proposed Amount for 2013	Transfers Authorized by Statute
General	Special Equipment	-	3,000	3,000	17-1336a
Totals		0	3,000	3,000	
Adjustments*					
Adjusted Totals		0	3,000	3,000	

***Note:** Adjustments are required only if the transfer is being made in 2012 and/or 2013 from a non-budgeted fund.

Adopted Budget General	Prior Year Actual 2011	Current Year Estimate 2012	Proposed Budget Year 2013
Unencumbered Cash Balance Jan 1	411	184	20
Receipts:			
Ad Valorem Tax	14,344	14,635	xxxxxxxxxxxxxxxxxxxxxx
Delinquent Tax	196	145	150
Motor Vehicle Tax	1,739	1,524	1,556
Recreational Vehicle Tax	45	39	43
16/20M Vehicle Tax	37	37	52
LAVTR			0
Slider	0	0	0
In Lieu of Taxes			
Lot Sales	300	450	350
Interest on Idle Funds	6	6	8
Miscellaneous			
Does miscellaneous exceed 10% of Total Receipts			
Total Receipts	16,667	16,836	2,159
Resources Available:	17,078	17,020	2,179
Expenditures:			
Contractual	13,354	10,000	10,000
Commodities	3,540	3,000	3,000
Capital Outlay	0	1,000	1,000
Transfer to Reserve Acct	0	3,000	3,000
Neighborhood Revitalization Rebate			
Miscellaneous			
Does miscellaneous exceed 10% of Total Expenditures			
Total Expenditures	16,894	17,000	17,000
Unencumbered Cash Balance Dec 31	184	20	xxxxxxxxxxxxxxxxxxxxxx
2011/2012 Budget Authority Amount:	17,000	17,000	Non-Appr Bal
			Tot Exp/Non-Appr Bal
			17,000
			Tax Required
			14,821
			Del Comp Rate: 2.000%
			296
			Amount of 2012 Ad Valorem Tax
			15,117

NOTICE OF BUDGET HEARING

State of Kansas
Special District
2013

The governing body of
Empire Cemetery
McPherson County

will meet on August 6, 2012 at 7:00 p.m. at Empire Cemetery for the purpose of hearing and answering objections of taxpayers relating to the proposed use of all funds and the amount of tax to levied. Detailed budget information is available at Galva City Hall and will be available at this hearing.

BUDGET SUMMARY

Proposed Budget 2013 Expenditures and Amount of 2012 Ad Valorem Tax establish the maximum limits of the 2013 budget. Estimated Tax Rate is subject to change depending on the final assessed valuation.

FUND	Prior Year Actual 2011		Current Year Estimate for 2012		Proposed Budget Year for 2013		
	Expenditures	Actual Tax Rate*	Expenditures	Actual Tax Rate*	Expenditures	Amount of 2012 Ad Valorem Tax	Actual Tax Rate*
General	16,894	1.063	17,000	1.025	17,000	15,117	1.034
Debt Service							
Non-Budgeted Funds							
Totals	16,894	1.063	17,000	1.025	17,000	15,117	1.034
Less: Transfers	0		3,000		3,000		
Net Expenditures	16,894		14,000		14,000		
Total Tax Levied	14,873		14,928		xxxxxxxxxxxxxxxxxxxx		
Assessed Valuation	13,990,426		14,565,725		14,617,229		

Outstanding Indebtedness,

	2010	2011	2012
Jan 1,			
G.O. Bonds	0	0	0
Revenue Bonds	0	0	0
No-Fund Warrant	0	0	0
Lease Pur. Princ.	0	0	0
Total	0	0	0

*Tax rates are expressed in mills.

Sinda K. Andersen
Clerk

Page No. 7

SPECIAL DISTRICT RESOLUTION
2012 - 1
RESOLUTION NO. ~~2010-1~~

A resolution expressing the property taxation policy of the Board of Empire Cemetery District with respect to financing the 2013 annual budget for Empire Cemetery, McPherson County, Kansas.

Whereas, K.S.A. 79-2925b provides that a resolution be adopted if property taxes levied to finance the 2013 Empire Cemetery district budget exceed the amount levied to finance the 2012 Empire Cemetery except with regard to revenue produced and attributable to the taxation of 1) new improvements to real property; 2) increased personal property valuation, other than increased valuation of oil and gas leaseholds and mobile homes; and 3) property which has changed in use during the past year, or with regard to revenue produced for the purpose of repaying the principal of and interest upon bonded indebtedness, temporary notes, or no-fund warrants; and

Whereas, budgeting, taxing and service level decisions for all district services are the responsibility of the district board; and

Whereas, Empire Cemetery provides essential services to district residents; and

Whereas, the cost of provision of these services continues to increase.

NOW, THEREFORE, BE IT RESOLVED by the Board of the Empire Cemetery that is our desire to notify the public of the possibility of increased property taxes to finance the 2013 Empire Cemetery budget as defined above.

Adopted this 11th day of July, 2012 by the Empire Cemetery District Board, McPherson County, Kansas.

Empire Cemetery District Board


, Chair/President


, Member


, Member

Page No. 8

(Attach a signed copy to the budget)

AFFIDAVIT OF PUBLICATION

STATE OF KANSAS, McPHERSON COUNTY, ss:

Joni Regnier, being first duly sworn, deposes and says:
That she is Advertising Director of:

The McPherson Sentinel

301 S. Main, P.O. Box 926, McPherson, KS 67460

a daily newspaper printed in the State of Kansas, and published in and of general circulation in McPherson County, Kansas, with a general paid circulation on a daily basis in McPherson County, Kansas, and that said newspaper is not a trade, religious or fraternal publication.

Said newspaper is a daily published at least weekly 50 times a year; has been so published continuously and uninterruptedly in said county and state for a period of more than five years prior to the first publication of said notice; and has been admitted at the post office of McPherson in said County as second class matter.

That the attached notice is a true copy thereof and was published in the regular and entire issue of said

newspaper for 1 consecutive week, the
(week, days)

first publication thereof being made as aforesaid on

the 13th day of July, 2012, with subsequent publications being made on the following dates:

_____, 20____, 20____

_____, 20____, 20____

_____, 20____, 20____

Joni Regnier
Advertising Director

Subscribed and sworn to before me this 13th day of

July, 2012.

Verna L. Rowe
Notary Public

VERNA L. ROWE

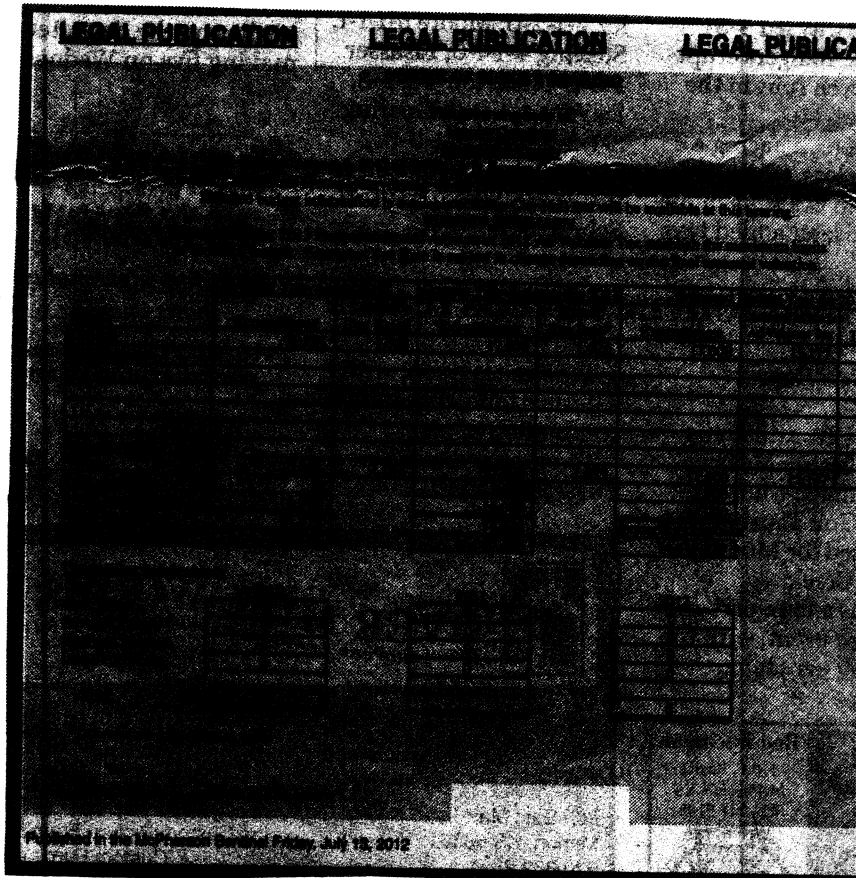
Notary Public

State of Kansas

My Appt. Exp. 10-18-2012

Printer's fee \$ 88.20

Additional copies \$ _____



AFFIDAVIT OF PUBLICATION

STATE OF KANSAS, McPHERSON COUNTY, ss:

Joni Regnier, being first duly sworn, deposes and says:
That she is Advertising Director of:

The McPherson Sentinel

301 S. Main, P.O. Box 926, McPherson, KS 67460

a daily newspaper printed in the State of Kansas, and published in and of general circulation in McPherson County, Kansas, with a general paid circulation on a daily basis in McPherson County, Kansas, and that said newspaper is not a trade, religious or fraternal publication.

Said newspaper is a daily published at least weekly times a year; has been so published continuously uninterrupted in said county and state for a period more than five years prior to the first publication notice; and has been admitted at the post office at McPherson in said County as second class matter.

That the attached notice is a true copy thereof as published in the regular and entire issue of said

newspaper for 1 consecutive week
(week, or

first publication thereof being made as aforesaid on
the 13th day of July, 2012
subsequent publications being made on the following
dates:

_____, 20____
_____, 20____
_____, 20____

Joni Regnier
Advertising Director

Subscribed and sworn to before me this 5th day of
September, 2012.

Verna L. Rowe
Notary Public

Printer's fee \$ 88.20
Additional copies \$ _____

VERNA L. ROWE
Notary Public
State of Kansas
My Appt. Exp. 10-18-2012

