

2013

**CERTIFICATE**

To the Clerk of McPherson County, State of Kansas  
We, the undersigned, officers of  
**Delmore Township**

certify that: (1) the hearing mentioned in the attached publication was held;  
(2) after the Budget Hearing this budget was approved and adopted as the  
maximum expenditures for the various funds for the year 2013; and (3) the  
Amount(s) of 2012 Ad Valorem Tax are within statutory limitations for the 2013 Budget.

			2013 Adopted Budget		
Table of Contents:			Expenditure	Amount of 2012 Ad Valorem Tax	County Clerk's Use Only
Computation to Determine Limit for 2013	2				
Alloc of MVT, RVT, 16/20M Vehicles & Sli	3				
Schedule of Transfers	4				
Statement of Indebt. & Lease/Purchase					
Fund	K.S.A.				
General	79-1962	5	4,584	0	
Debt Service	10-113				
Road	68-518c	6	87,990	77,327	24,794
Non-Budgeted Funds					
Special Machinery		6			
Totals	XXXXXX		92,574	77,327	24,794
Budget Summary		7			
Neighborhood Revitalization Rebate			Is a Resolution required?	No	
Resolution		8			
Final Assessed Valuation:	County Clerk's Use Only				
Township	3,118,851				
	November 1st Valuation				

Assisted by:

Rick Witte, County Administrator

McPherson County

Address:

PO Box 646

McPherson, KS 67460

Attest: 7-20 2012

*Cathy Schmidt*  
County Clerk

*James Clark*  
Governing Body

Special Road Election held \_\_\_\_\_ for \_\_\_ Mills for \_\_\_ years.  
First levy in \_\_\_\_\_.

Salaries and Wages: Please report here the total amount of salaries and wages paid in 2011 by the township  
to all employees, full and part-time. This figure may be taken from the 2011 W-3 form that your township filed  
with the IRS. \$ \_\_\_\_\_

Delmore Township

2013

**Computation to Determine Limit for 2013**

	<b>Amount of Levy</b>
1. Total Tax Levy Amount in 2012	+ \$ 85,553
2. Debt Service Levy in 2012	- \$ 0
3. Tax Levy Excluding Debt Service	\$ 85,553

**2012 Valuation Information for Valuation Adjustments:**

4. New Improvements for 2012:	+ 26,115	
5. Increase in Personal Property for 2012:		
5a. Personal Property 2012	+ 49,816	
5b. Personal Property 2011	- 32,662	
5c. Increase in Personal Property (5a minus 5b)	+ 17,154	
	(Use Only if > 0)	
6. Valuation of Property that Changed in Use during 2012:	+ 1,626	
7. Total Valuation Adjustment (Sum of 4, 5c, 6)	44,895	
8. Total Estimated Valuation July 1, 2012	3,103,101	
9. Total Valuation less Valuation Adjustment (8 minus 7)	3,058,206	
10. Factor for Increase (7 divided by 9)	0.01468	
11. Amount of Increase (10 times 3)	+ \$ 1,256	
12. Maximum Tax Levy, excluding debt service, without Resolution (3 plus 11)	\$ 86,809	
13. Debt Service Levy in this 2013	0	
14. Maximum levy, including debt service, without a Resolution (12 plus 13)	86,809	

If the 2013 budget includes tax levies exceeding the total on line 14, you must adopt a resolution to exceed this limit and attach a copy to this budget.

Delmore Township

2013

Allocation of Motor, Recreational, and 16/20M Vehicle Tax and Slider

2012 Budgeted Funds	Budget Tax Levy Amount for 2011	Allocation for Year 2013			
		MVT	RVT	16/20M Veh	Slider
General		0	0	0	0
Debt Service	0	0	0	0	0
Road	85,553	5,991	92	577	0
	0	0	0	0	0
	0	0	0	0	0
	0	0	0	0	0
	0	0	0	0	0
	0	0	0	0	0
	0	0	0	0	0
Total	85,553	5,991	92	577	0

County Treasurer's Motor Vehicle Estimate 5,991

County Treasurer's Recreational Vehicle Estimate 92

County Treasurer's 16/20M Vehicle Estimate 577

County Treasurer's Slider Estimate 0

Motor Vehicle Factor 0.07003

Recreational Vehicle Factor 0.00108

16/20M Vehicle Factor 0.00674

Slider Factor 0.00000

2013

Delmore Township

**Schedule of Transfers**

<b>Expenditure Fund Transferred From:</b>	<b>Receipt Fund Transferred To:</b>	<b>Actual Amount for 2011</b>	<b>Current Amount for 2012</b>	<b>Proposed Amount for 2013</b>	<b>Transfers Authorized by Statute</b>
General	Special Machinery	-	9,000	-	80-1406b
General	Special Machinery	-	-	-	
Road	Special Machinery	11,487	-	-	68-141g
Total		11,487	9,000	0	
Adjustments*					
Adjusted Totals		11,487	9,000	0	

\*Note: Adjustments are required only if the transfer is being made in 2012 and/or 2013 from a non-budgeted fund.

Delmore Township  
FUND PAGE - GENERAL

2013

Adopted Budget General	Prior Year Actual 2011	Current Year Estimate 2012	Proposed Budget Year 2013
Unencumbered Cash Balance January 1	12,610	12,610	600
Receipts:			
Ad Valorem Tax		0	xxxxxxxxxxxxxxxxxx
Delinquent Tax			
Motor Vehicle Tax			0
Recreational Vehicle Tax			0
16/20 M Vehicle Tax			0
LAVTR			0
Slider			0
Gross Earnings (Intangibles) Tax	3,512	2,964	3,984
Transfer to Special Machine			
Interest on Idle Funds			
Miscellaneous			
Does miscellaneous exceed 10% of Total Receipts			
<b>Total Receipts</b>	<b>3,512</b>	<b>2,964</b>	<b>3,984</b>
<b>Resources Available:</b>	<b>16,122</b>	<b>15,574</b>	<b>4,584</b>
Expenditures:			
Officers Pay	2,040	2,040	2,040
Salaries & Wages			
Employee Benefits			
Supplies	111	134	120
Equipment			
Buildings Maintenance			
Insurance	1,361	3,800	2,424
Transfer to Spec. Mach.(No Levy)		9,000	0
Does the General Fund have a tax levy			
Transfer to Spec. Mach.(Gen has Levy)			
The transfer can not exceed 25% of Resouces Availabl			
Neighborhood Revitalization Rebate			
Miscellaneous			
Does miscellaneous exceed 10% of Total Expenditure:			
<b>Total Expenditures</b>	<b>3,512</b>	<b>14,974</b>	<b>4,584</b>
Unencumbered Cash Balance Dec 31	12,610	600	xxxxxxxxxxxxxxxxxx
2011/2012 Budget Authority Amount:	3,600	14,974	Non-Appr Bal
			Tot Exp/Non-Appr Bal
			Tax Required
			Del Comp Rate: 2.000%
			Amount of 2012 Ad Valorem Tax

Delmore Township  
FUND PAGE - ROAD AND SPECIAL MACHINERY  
Adopted Budget

2013

Road	Prior Year Actual 2011	Current Year Estimate 2012	Proposed Budget Year 2013
Unencumbered Cash Balance January 1	4,639	4,640	2,269
Receipts:			
Ad Valorem Tax	64,916	83,875	xxxxxxxxxxxxxxxx
Delinquent Tax	422	500	500
Motor Vehicle Tax	5,827	6,075	5,991
Recreational Vehicle Tax	73	98	92
16/20M Vehicle Tax	303	281	577
Slider	0	0	0
Special Highway/Gasoline Tax	2,779	2,755	2,750
Interest on Idle Funds			
Miscellaneous			
Does miscellaneous exceed 10% of Total Receipts			
<b>Total Receipts</b>	<b>74,320</b>	<b>93,584</b>	<b>9,910</b>
<b>Resources Available:</b>	<b>78,959</b>	<b>98,224</b>	<b>12,179</b>
Expenditures:			
Officers Pay	225	1,440	1,440
Salaries & Wages	6,722	8,000	8,000
Employee Benefits	965	1,200	1,200
Road Maintenance	14,290	8,000	8,000
Road Materials	29,978	23,750	23,750
Equipment	8,282	53,565	45,600
Insurance	2,370	0	
Transfer to Special Machinery	11,487	0	
Does the transfer exceed 25% of Resources Available			
Neighborhood Revitalization Rebate			
Miscellaneous			
Does miscellaneous exceed 10% of Total Expenditures			
<b>Total Expenditures</b>	<b>74,319</b>	<b>95,955</b>	<b>87,990</b>
Unencumbered Cash Balance Dec 31	4,640	2,269	xxxxxxxxxxxxxxxx
2011/2012 Budget Authority Amount:	76,640	95,955	Non-Appr Bal
			Tot Exp/Non-Appr Bal
			Tax Required
			Del Comp Rate: 2.000%
			Amount of 2012 Ad Valorem Tax

Special Machinery K.S.A. 68-141g	2011 Actual
Unencumbered Cash Balance, Jan 1	6,717
Transfers from:	
Road Fund	11,487
General Fund(No Levy)	0
General Fund(Gen has Levy)	0
Interest on Idle Funds	46
Other	
<b>Resources Available:</b>	<b>18,250</b>
<b>Total Expenditures</b>	<b>0</b>
<b>Unencumbered Cash Balance, Dec 31</b>	<b>18,250</b>

NOTICE OF BUDGET HEARING

2013

The governing body of  
Delmore Township  
McPherson County


will meet on August 6, 2012 at 8:00 p.m. at 1816 23rd Ave., Galva, KS 67443 for the purpose of hearing and answering objections of taxpayers relating to the proposed use of all funds and the amount of ad valorem tax. Detailed budget information is available at 1816 23rd Ave., Galva, KS 67443 and will be available at this hearing.

**BUDGET SUMMARY**

Proposed Budget 2013 Expenditures and Amount of 2012 Ad Valorem Tax establish the maximum limits of the 2013 budget. Estimated Tax Rate is subject to change depending on the final assessed valuation.

Fund	Prior Year Actual 2011		Current Year Estimate 2012		Proposed Budget 2013		
	Expenditures	Actual Tax Rate*	Expenditures	Actual Tax Rate*	Expenditures	Amount of 2012 Ad Valorem Tax	Est. Tax Rate*
General	3,512		14,974		4,584		
Debt Service							
Road	74,319	22.440	95,955	22.919	87,990	77,327	24.919
Non-Budgeted Funds							
Special Machinery							
Totals	77,831	22.440	110,929	22.919	92,574	77,327	24.919
Less: Transfers	11,487		9,000		0		
Net Expenditure	66,344		101,929		92,574		
Total Tax Levied	65,207		85,553		XXXXXXXXXXXXXX		
Assessed Valuation:							
Township	2,905,831		3,732,938		3,103,101		
Outstanding Indebtedness,							
Jan 1	2010		2011		2012		
G.O. Bonds	0		0		0		
Other	0		0		0		
Lease Pur Princ	0		0		0		
Total	0		0		0		

\*Tax rates are expressed in mills.

  
Township Officer

# AFFIDAVIT OF PUBLICATION

STATE OF KANSAS, McPHERSON COUNTY, ss:

Regnier, being first duly sworn, deposes and says:  
she is Advertising Director of:

## The McPherson Sentinel

301 S. Main, P.O. Box 926, McPherson, KS 67460

daily newspaper printed in the State of Kansas, and  
published in and of general circulation in McPherson  
County, Kansas, with a general paid circulation on a daily  
basis in McPherson County, Kansas, and that said news-  
paper is not a trade, religious or fraternal publication.

The newspaper is a daily published at least weekly 50  
times a year; has been so published continuously and  
uninterruptedly in said county and state for a period of  
more than five years prior to the first publication of said  
newspaper; and has been admitted at the post office of  
McPherson in said County as second class matter.

The attached notice is a true copy thereof and was  
published in the regular and entire issue of said

newspaper for 1 consecutive week, the  
(week, days)

publication thereof being made as aforesaid on

18th day of July, 2012, with  
subsequent publications being made on the following  
days:

\_\_\_\_\_, 20\_\_\_\_\_, 20\_\_\_\_\_

\_\_\_\_\_, 20\_\_\_\_\_, 20\_\_\_\_\_

\_\_\_\_\_, 20\_\_\_\_\_, 20\_\_\_\_\_

Joan Regnier  
Advertising Director

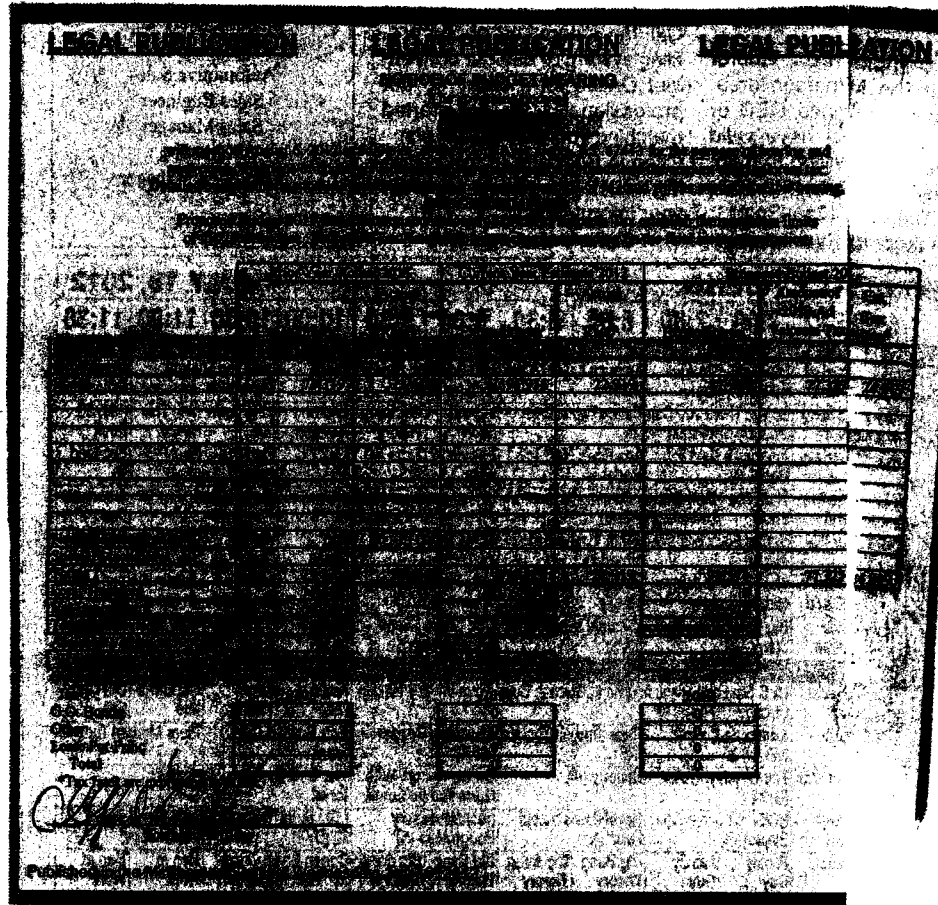
Subscribed and sworn to before me this 18th day of

July, 2012

Verna L. Rowe  
Notary Public

Notary's fee \$ 88.20

Additional copies \$ \_\_\_\_\_



**VERNA L. ROWE**  
Notary Public  
State of Kansas

My Appt. Exp. 10-18-2012