

**CERTIFICATE**

2013

To the Clerk of Jefferson County, State of Kansas  
We, the undersigned, officers of

**Rural Township**

certify that: (1) the hearing mentioned in the attached publication was held;  
(2) after the Budget Hearing this budget was approved and adopted as the  
maximum expenditures for the various funds for the year 2013; and (3) the  
Amount(s) of 2012 Ad Valorem Tax are within statutory limitations for the 2013 Budget.

			2013 Adopted Budget		
			Budget Authority for Expenditures	Amount of 2012 Ad Valorem Tax	County Clerk's Use Only
Table of Contents:		Page No.			
Computation to Determine Limit for 2013		2			
Alloc of MVT, RVT, and 16/20M Vehicles		3			
Schedule of Transfers		4			
Statement of Indebt. & Lease/Purchase		5			
Fund	K.S.A.				
General	79-1962	6	8,950	2,803	1,302
Debt Service	10-113				
Library	12-1220				
Road	68-518c				
Building	80-115		46,525	9,267	1,000
Special Machinery					
Totals		xxxxxx	55,475	12,070	1,303
Budget Summary		0			
Neighborhood Revitalization Rebate			Is a Resolution required? No		
Resolution					
Final Assessed Valuation:	County Clerk's Use Only				
Township	9,262,296				
	Nov. 1, 2012 Valuation				

Assisted by:

Address:

Email:

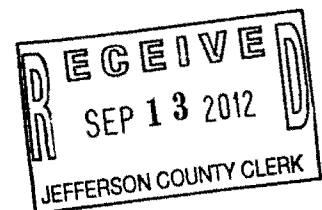
Attest: 9/14 2012

*Sandra M. Balthus*  
County Clerk

*Mike Cramer* Tre.  
*Deloris D. Myers-Robb* Clerk  
*R. U. Miller* Treasurer

Governing Body

Special Road Election held for Mills for years.  
First levy in



Rural Township

2013

**Computation to Determine Limit for 2013**

	<b>Amount of Levy</b>
1. Total Tax Levy Amount in 2012	+ \$ 11,920
2. Debt Service Levy in 2012	- \$ 0
3. <b>Tax Levy Excluding Debt Service</b>	<u>\$ 11,920</u>

**2012 Valuation Information for Valuation Adjustments:**

4. <b>New Improvements for 2012:</b>	+ 60,367
5. <b>Increase in Personal Property for 2012:</b>	
5a. Personal Property 2012	+ 1,337,289
5b. Personal Property 2011	- 1,256,947
5c. Increase in Personal Property (5a minus 5b)	+ 80,342
	(Use Only if > 0)
6. <b>Valuation of Property that Changed in Use during 2012:</b>	+ 0
7. <b>Total Valuation Adjustment (Sum of 4, 5c, 6)</b>	<u>140,709</u>
8. Total Estimated Valuation July 1, 2012	<u>9,263,475</u>
9. <b>Total Valuation less Valuation Adjustment (8 minus 7)</b>	<u>9,122,766</u>
10. Factor for Increase (7 divided by 9)	<u>0.01542</u>
11. Amount of Increase (10 times 3)	+ \$ 184
12. <b>Maximum Tax Levy, excluding debt service, without Resolution (3 plus 11)</b>	<u>\$ 12,104</u>
13. <b>Debt Service Levy in this 2013</b>	<u>0</u>
14. <b>Maximum levy, including debt service, without a Resolution (12 plus 13)</b>	<u><u>12,104</u></u>

If the 2013 budget includes tax levies exceeding the total on line 14, you must adopt a resolution to exceed this limit and attach a copy to this budget.

Rural Township  
Jefferson County

2013

**Allocation of Motor, Recreational, and 16/20M Vehicle Tax**

Budgeted Funds for 2012	Budget Tax Levy Amount for 2013	Allocation for Proposed Year 2013		
		MVT	RVT	16/20M Veh
General	3,083	352	7	26
Debt Service	0	0	0	0
Library	0	0	0	0
Road	0	0	0	0
Building	8,837	1,009	22	76
	0	0	0	0
	0	0	0	0
	0	0	0	0
	0	0	0	0
	0	0	0	0
Total	11,920	1,361	29	102

County Treasurer's Motor Vehicle Estimate 1,361

County Treasurer's Recreational Vehicle Estimate 29

County Treasurer's 16/20M Vehicle Estimate 102

Motor Vehicle Factor 0.11415

Recreational Vehicle Factor 0.00245

16/20M Vehicle Factor 0.00858

2013

Rural Township

**Schedule of Transfers**

<b>Expenditure Fund Transferred From:</b>	<b>Receipt Fund Transferred To:</b>	<b>Actual Amount for 2011</b>	<b>Current Amount for 2012</b>	<b>Proposed Amount for 2013</b>	<b>Transfers Authorized by Statute</b>
General	Special Machinery	-	-	-	
General	Special Machinery	-	-	-	
Road	Special Machinery	-	-	-	
Total		0	0	0	
Adjustments*					
Adjusted Totals		0	0	0	

\*Note: Adjustments are required only if the transfer is being made in 2012 and/or 2013 from a non-budgeted fund.

Rural Township

2013

**FUND PAGE FOR FUNDS WITH A TAX LEVY**

Adopted Budget <b>General</b>	Prior Year Actual for 2011	Current Year Estimate for 2012	Proposed Budget Year for 2013
Unencumbered Cash Balance January 1	3,597	4,789	5,762
Receipts:			
Ad Valorem Tax	3,006	3,083	xxxxxxxxxxxxxx
Delinquent Tax	48	20	
Motor Vehicle Tax	352	335	352
Recreational Vehicle Tax	7	8	7
16/20 M Vehicle Tax	24	24	26
LAVTR			0
Gross Earnings (Intangibles) Tax			0
County Treasurer Balance December 31	-53		
County Treasurer Balance January 1	45	53	
Interest on Idle Funds	227		
Miscellaneous			
Does miscellaneous exceed 10% of Total Rec			
<b>Total Receipts</b>	<b>3,656</b>	<b>3,523</b>	<b>385</b>
<b>Resources Available:</b>	<b>7,253</b>	<b>8,312</b>	<b>6,147</b>
Expenditures:			
Officers Pay			
Salaries & Wages			
Employee Benefits			
Supplies	351	350	350
Equipment	300	300	6,900
Buildings Maintenance	1,814	1,900	1,700
Insurance			
Transfer to Spec. Mach.(No Levy)			
Does the General Fund have a tax levy			
Transfer to Spec. Mach.(Gen has Levy)			
Transfer can not exceed 25% Resources Avail			
Neighborhood Revitalization Rebate			
Miscellaneous			
Does misc. exceed 10% of Total Expenditures			
<b>Total Expenditures</b>	<b>2,464</b>	<b>2,550</b>	<b>8,950</b>
Unencumbered Cash Balance Dec 31	4,789	5,762	xxxxxxxxxxxxxx
2011/2012 Budget Authority Amount:	4,932	3,547	xxxxxxxxxxxxxx
Non-Appropriated Balance			
Total Expenditure/Non-Appr Balance			8,950
Tax Required			2,803
Delinquent Comp Rate: 0.0%			0
Amount of 2012 Ad Valorem Tax			2,803

Rural Township

2013

**FUND PAGE FOR FUNDS WITH A TAX LEVY**

Adopted Budget	Prior Year Actual for 2011	Current Year Estimate for 2012	Proposed Budget Year for 2013
<b>Building</b>			
Unencumbered Cash Balance January 1	7,642	29,047	36,151
Receipts:			
Ad Valorem Tax	8,779	8,837	XXXXXXXXXXXXXX
Delinquent Tax	134	50	
Motor Vehicle Tax	981	977	1,009
Recreational Vehicle Tax	21	23	22
16/20 M Vehicle Tax	71	70	76
Donations/Fundraiser	13,994		
County Treasurer Balance December 31	-147		
County Treasurer Balance January 1	131	147	
Interest on Idle Funds	280		
Miscellaneous			
Does miscellaneous exceed 10% of Total Rec			
<b>Total Receipts</b>	<b>24,243</b>	<b>10,104</b>	<b>1,107</b>
<b>Resources Available:</b>	<b>31,885</b>	<b>39,151</b>	<b>37,258</b>
Expenditures:			
Building Improvements & Maintenance	2,618	3,000	46,525
Neighborhood Revitalization Rebate			
Miscellaneous	220		
Does misc. exceed 10% of Total Expenditures			
<b>Total Expenditures</b>	<b>2,838</b>	<b>3,000</b>	<b>46,525</b>
Unencumbered Cash Balance Dec 31	29,047	36,151	XXXXXXXXXXXXXX
2011/2012 Budget Authority Amount:	29,973	11,110	XXXXXXXXXXXXXX
Non-Appropriated Balance			
Total Expenditure/Non-Appr Balance			46,525
Tax Required			9,267
Delinquent Comp Rate:	0.0%		0
Amount of 2012 Ad Valorem Tax			9,267

Adopted Budget

0	Prior Year Actual for 2011	Current Year Estimate for 2012	Proposed Budget Year for 2013
Unencumbered Cash Balance January 1		0	0
Receipts:			
Ad Valorem Tax		0	XXXXXXXXXXXXXX
Delinquent Tax			
Motor Vehicle Tax			0
Recreational Vehicle Tax			0
16/20M Vehicle Tax			0
Interest on Idle Funds			
Miscellaneous			
Does miscellaneous exceed 10% of Total Rec			
<b>Total Receipts</b>	<b>0</b>	<b>0</b>	<b>0</b>
<b>Resources Available:</b>	<b>0</b>	<b>0</b>	<b>0</b>
Expenditures:			
Neighborhood Revitalization Rebate			
Miscellaneous			
Does misc. exceed 10% of Total Expenditures			
<b>Total Expenditures</b>	<b>0</b>	<b>0</b>	<b>0</b>
Unencumbered Cash Balance Dec 31	0	0	XXXXXXXXXXXXXX
2011/2012 Budget Authority Amount:	0	0	XXXXXXXXXXXXXX
Non-Appropriated Balance			
Total Expenditure/Non-Appr Balance			0
Tax Required			0
Delinquent Comp Rate:	0.0%		0
Amount of 2012 Ad Valorem Tax			0

# NOTICE OF BUDGET HEARING

The governing body of  
**Rural Township**  
**Jefferson County**

will meet on September 6, 2012 at 7:00 p.m. at Rural Fire Station for the purpose of hearing and answering objections of taxpayers relating to the proposed use of all funds and the amount of ad valorem tax. Detailed budget information is available at County Clerk's Office and will be available at this hearing.

## BUDGET SUMMARY

Proposed Budget 2013 Expenditures and Amount of 2012 Ad Valorem Tax establish the maximum limits of the 2013 budget. Estimated Tax Rate is subject to change depending on the final assessed valuation.

Fund	Prior Year Actual 2011		Current Year Estimate 2012		Proposed Budget 2013		
	Expenditures	Actual Tax Rate*	Expenditures	Actual Tax Rate*	Budget Authority for Expenditures	Amount of 2012 Ad Valorem Tax	Est. Tax Rate*
General	2,464	0.342	2,550	0.378	8,950	2,803	0.303
Debt Service							
Library							
Road							
Building	2,838	0.999	3,000	0.999	46,525	9,267	1.000
Special Machinery							
Totals	5,302	1.341	5,550	1.377	55,475	12,070	1.303
Less: Transfers	0		0		0		
Net Expenditure	5,302		5,550		55,475		
Total Tax Levied	12,080		11,920		xxxxxxxxxxxxxxx		
Assessed Valuation:							
Township	9,010,021		8,847,136		9,263,475		
Outstanding Indebtedness,							
Jan 1	2010		2011		2012		
G.O. Bonds	0		0		0		
Other	0		0		0		
Lease Purchase Principal	0		0		0		
Total	0		0		0		

\*Tax rates are expressed in mills.

Richard Williams  
Township Treasurer

**PUBLIC NOTICE**

(Published in The Oskaloosa Independent August 16, 2012)1t

**NOTICE OF BUDGET HEARING**

The governing body of

**Rural Township and Jefferson County Fire District #3 (Rural)****Jefferson County**

will meet on September 6th at 7:00 p.m. At the Rural Fire Station for the purpose of hearing and answering objections of taxpayers relating to the proposed use of all funds and the amount of ad valorem tax. Detailed budget information is available at County Clerk's Office and will be available at this hearing.

**BUDGET SUMMARY**

Proposed Budget 2013 Expenditures and Amount of 2012 Ad Valorem Tax establish the maximum limits of the 2013 budget. Estimated Tax Rate is subject to change depending on the final assessed valuation.

Fund	Prior Year Actual 2011		Current Year Estimate 2012		Proposed Budget 2013		
	Expenditures	Actual Tax Rate*	Expenditures	Actual Tax Rate*	Budget Authority for Expenditures	Amount of 2012 Ad Valorem Tax	Est. Tax Rate*
Township General	2,464	0.342	2,550	0.378	8,950	2,803	0.303
Building	2,838	0.999	3,000	0.999	46,525	9,267	1.000
Fire District General	25,462	2.663	26,000	2.707	46,055	23,947	2.585
No-Fund Warrants	27,760	2.698	27,760	2.742	3,507	0	0.000
Special Machinery							
Totals	58,524	6.702	59,310	6.826	105,037	36,017	3.888
Less: Transfers	0		0		0		
Net Expenditure	58,524		59,310		105,037		
Total Tax Levied	60,386		60,122		XXXXXXXXXXXXXXXXXXXX		
Fire District Valuation	9,010,021		8,847,136		9263475		
Township Only Valuation	9,010,021		8,847,136		9,263,475		
Outstanding Indebtedness, Jan 1	2010		2011		2012		
G.O. Bonds	0		0		0		
Other	0		0		24,371		
Lease Purchase Principal	0		0		0		
Total	0		0		24,371		

\*Tax rates are expressed in mills.

Richard Williams, Township Treasurer

**PUBLIC NOTICE**

(Published in The Oskaloosa Independent August 16, 23, and 30, 2012)3t

IN THE DISTRICT COURT OF  
JEFFERSON COUNTY, KANSAS  
Bank of America, N.A.

Plaintiff,

vs.

Nigel D Woodgate

AKA Nigel Woodgate, et al.,

Defendants.

Case No. 12CV81

Division 1

K.S.A. 60 Mortgage Foreclosure  
(Title to Real Estate Involved)

**NOTICE OF SHERIFF'S SALE**

Under and by virtue of an Order of Sale issued by the Clerk of the District Court in and for the said County of Jefferson, State of Kansas, in a certain cause in said Court Numbered 12CV81, wherein the parties above named were respectively plaintiff and defendant, and to me, the undersigned Sheriff of said County, directed, I will offer for sale at public auction and sell to the highest bidder for cash in hand at 10:00 AM, on 09/11/2012, at the front door of Jefferson County Courthouse, the following described real estate located in the County of Jefferson, State of Kansas, to wit:

LOT 5, 6, AND 7, BLOCK J, LAKE SHORE ESTATES, A SUBDIVISION IN JEFFERSON COUNTY, KANSAS, ACCORDING TO THE RECORDED PLAT THEREOF.

SHERIFF OF JEFFERSON  
COUNTY, KANSAS

Respectfully Submitted,

By:

Shawn Scharenborg, KS # 24542

Sara Knittel, KS # 23624

Kelli N. Breer, KS # 17851

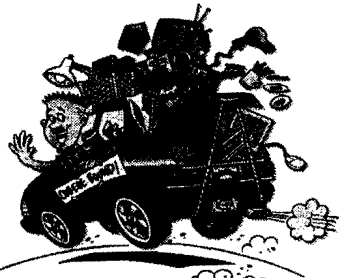
Kozeny &amp; McCubbin, L.C.

(St. Louis Office)

12400 Olive Blvd., Suite 555

St. Louis, MO 63114

County General .....  
Road and Bridge .....  
Health .....  
Landfill Access - Road Maint .....  
Ambulance .....  
Appraiser's Cost .....  
Special Road and Bridge Mac .....  
Abandoned Cemetery .....  
Spec Parks and Recreation ....  
Spec Alcohol Program .....  
County Bond & Interest .....  
Payroll Clearing .....  
Auto Administration .....  
Rock Creek Road Fund .....  
Crime Victims Assistance .....  
Heritage Trust Fund .....  
Technology Register of Deeds .....  
Jefferson County Sheriff .....  
Road District #1 Special .....  
Special Law Enforcement Tru .....  
Elevator Maintenance Fund .....  
911 Emergency Communicatio .....  
District Court Trustee Op .....  
Jefferson County Equipment .....  
Law Enforcement .....  
Noxious Weed C. O. Equipmen .....  
Lake Patrol .....  
Ambulance Capital Outlay .....  
Jefferson County H.D./Hospice .....  
D.A.R.E. Fund .....  
Sales Tax Surplus - Jail, L .....  
Worthless Check Trust Fund .....  
County Attorney Fed. Forfeitu .....  
Stray Fund .....  
Fairway Drive Improvement .....  
Northwind Dist #3 Constructi .....  
JF CO Health & Dental Insur .....  
Northwind DR RD Dist #3 De .....  
Northwind DR RD Dist #3 Co .....  
Current Tax .....  
Motor Vehicle Personal Proper .....  
Redemptions .....  
Treasurer's Holding .....  
Collection Agency .....  
Prior Year Taxes .....  
D.A.



They are headed to college. Keep them from being homesick. Send

Name \_\_\_\_\_  
Address \_\_\_\_\_  
City \_\_\_\_\_ State \_\_\_\_\_ Zip \_\_\_\_\_  
Telephone \_\_\_\_\_  
Credit Card \_\_\_\_\_  
Expiration Date \_\_\_\_/\_\_\_\_ CCV \_\_\_\_

Please enclose payment with coupon and mail to the address below.  
Discover, Mastercard, and VISA accepted