

Sheep and Meat Goat Center Program Statement



**Prepared by:
Facilities Planning
Kansas State University
December 22, 2008**

Program

Sheep and Meat Goat Center

Introduction

The Kansas State University Sheep Unit needs to be relocated as a result of the sale of KSU property to the KSU Foundation. Kansas State University has an active sheep teaching and research program, but the facilities no longer meet the needs of the program. A new facility is needed on the main campus to meet the need for modern, functional facilities to continue to serve the sheep industry.

There is also a growing interest in the meat goat industry in the state of Kansas. Kansas livestock producers are turning to goats to provide added revenue as well as controlling weeds and invasive plants in pastures used by other animals.

To provide for this combined need, Kansas State University has developed plans for a new Sheep and Meat Goat Center. This facility will be located northwest of the intersection of Denison and Kimball Avenues just north of the current KSU Sheep Unit on the main campus.

The new combined facility will meet the needs of three core Sheep and Meat Goat programs for the Department of Animal Sciences Industry: 1) Academic program 2) Extension program; and 3) Research program.

Current Conditions

Kansas State University has seen an increase in our student population with an interest in meat goats while our sheep interest remains steady. Numerous Kansas livestock producers are exploring opportunities in the meat goat industry. In addition to experienced livestock producers, many individuals new to production agriculture are finding a real interest in the meat goat industry.

Meat goats are providing Kansas landowners with an environmentally friendly method of controlling the noxious weed *sericea lespedeza* (Chinese bush clover). This weed was the first state-declared noxious weed by the Kansas Legislature on July 1, 2000. Meat goats have also proven beneficial in the management of cedar and other invading plant species.

In addition to controlling weeds and invasive plants, the meat goat industry is growing rapidly across the United States and has provided Kansas agriculture an additional means of income. In response, the Department of Animal Sciences and Industry has added meat goats to the previously assigned Extension Sheep Specialist's primary role in serving Kansas stakeholders. Furthermore, meat goats are being added into the instructional aspects of undergraduate and graduate teaching.

Currently, we have very limited sheep and meat goat facilities for teaching, extension, and research functions of the university. Also, because of the recent land sale authorized by the Board of Regents, we must relocate the Kansas State University Sheep Unit. Our teaching laboratories are very weather dependent. We do not have facilities capable of providing necessary extension-based programming and continuing educational opportunities to Kansas sheep and meat goat producers. We do not have the means necessary to provide pen space for adequate replications in research trials.

The KSU Sheep Unit has had a historic reputation for providing excellent educational opportunities for Kansas stakeholders along with producing top-quality sheep genetics proven in breeding programs and livestock shows across the country. However, some of this identity has been lost as a result of declining facility conditions and the inability to stay current with today's advanced technologies. Upon completion of this facility, the KSU Sheep and Meat Goat Center will have the means to regain its nation-wide reputation for excellence in teaching, extension, and research. Students will be provided with an educational facility second to none that will expose them to the latest technological advancements in the sheep and meat goat industry. Kansas producers will have the ability to attend educational programs that will enhance the value of their operations. Researchers will be capable of conducting trials that will provide individuals with better management strategies and tools.

Project Description

The relocated KSU Sheep and Meat Goat Center will be made up of one large, continuous structure. The core area of the facility is 80' x 120'. Two livestock housing wings will branch off of the building each measuring 120' x 38'. Feed, hay, and large equipment building (35' x 68') will be attached to the end of one wing.

1. *Core Area*
 - 80' x 68' Multi-purpose room and 27' x 45' Multi-purpose room
 - 12' x 11' Office and 13' x 11' Lobby
 - 2 – 7' x 20' Men's and Women's Restroom/Locker/Shower
 - 13' x 16' Animal Treatment area and 13' x 16' Lab-Kitchen area
 - 15' x 18' Wool room
 - 10' x 18' Mechanical room
 - 26' x 27' On-site living quarters

Multi-purpose rooms will offer livestock handling area, lambing/kidding area, and a variety of educational opportunities. The Lab-Kitchen and Animal Treatment areas will allow faculty on-site facilities to perform educational procedures and trials that will minimize stress on the animals. The Wool Room will provide storage for the annual wool clip produced by the sheep as well as educational tools for the KSU Collegiate Wool Judging Team. On-site living quarters provide the Sheep and Meat Goat Center with intensive supervision of livestock and facilities along with providing site security.

2. *Livestock Housing Wings*

Wing 1: 6 outdoor lots with 30 sheep/meat goat per pen, with a minimum of 40 square feet per sheep/meat goat

Wing 2: 4 outdoor lots with 30 sheep/meat goat per pen, with a minimum of 40 square feet per sheep/meat goat and 4 outdoor lots with 15 sheep/meat goat

Lots holding 30 animals will each have a minimum of 1 – 20' x 30' area located under a 3-sided shed open to the south. Lots holding 15 animals will each have a minimum of 1-10' x 30' area located under a 3-sided shed open to the south. Feeding, watering, and housing stations are located in each lot.

This will be the primary housing and feeding location for sheep and meat goats.

3. *Feed, Hay, and Large Equipment Storage*

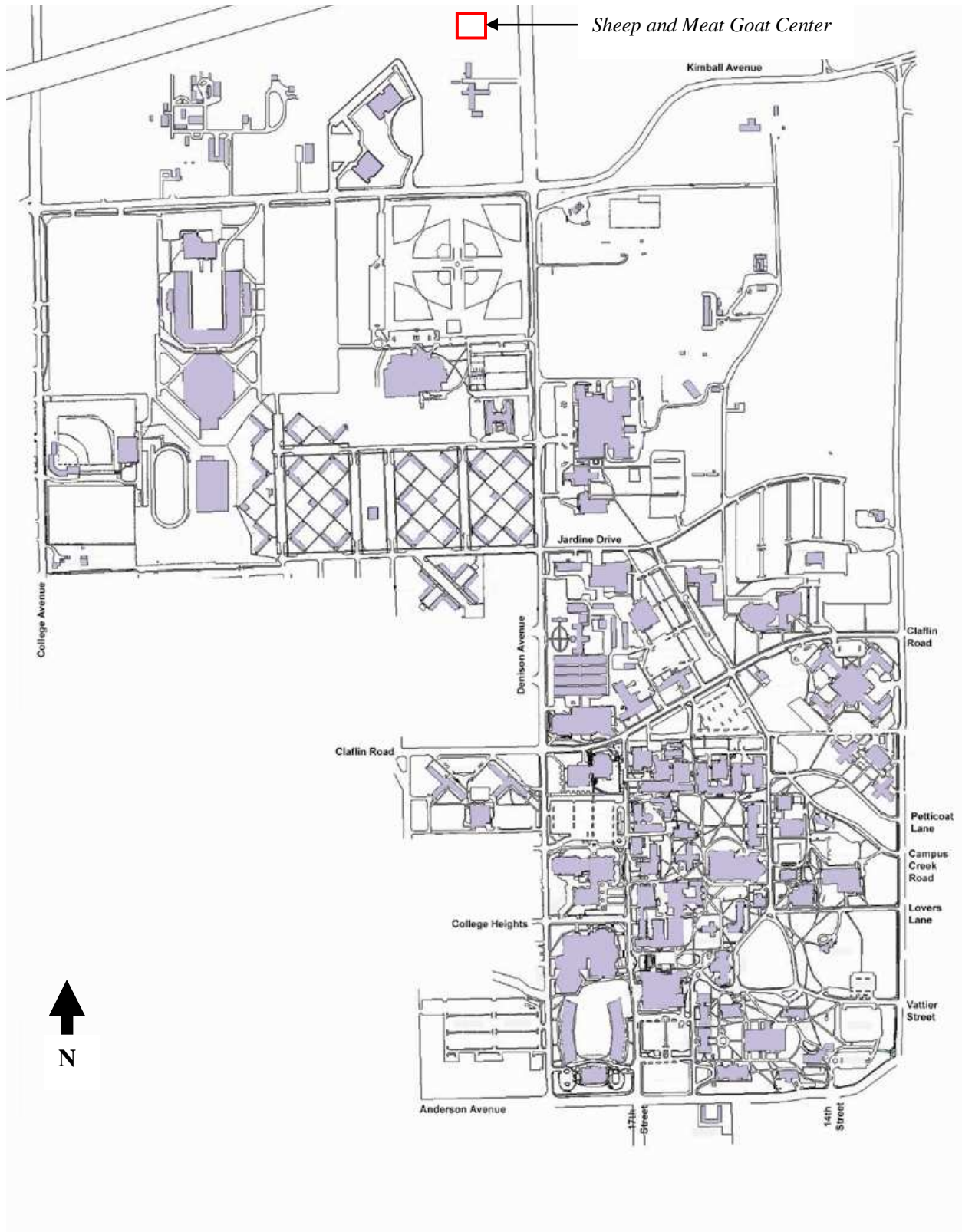
Feed Room – 35' x 18'

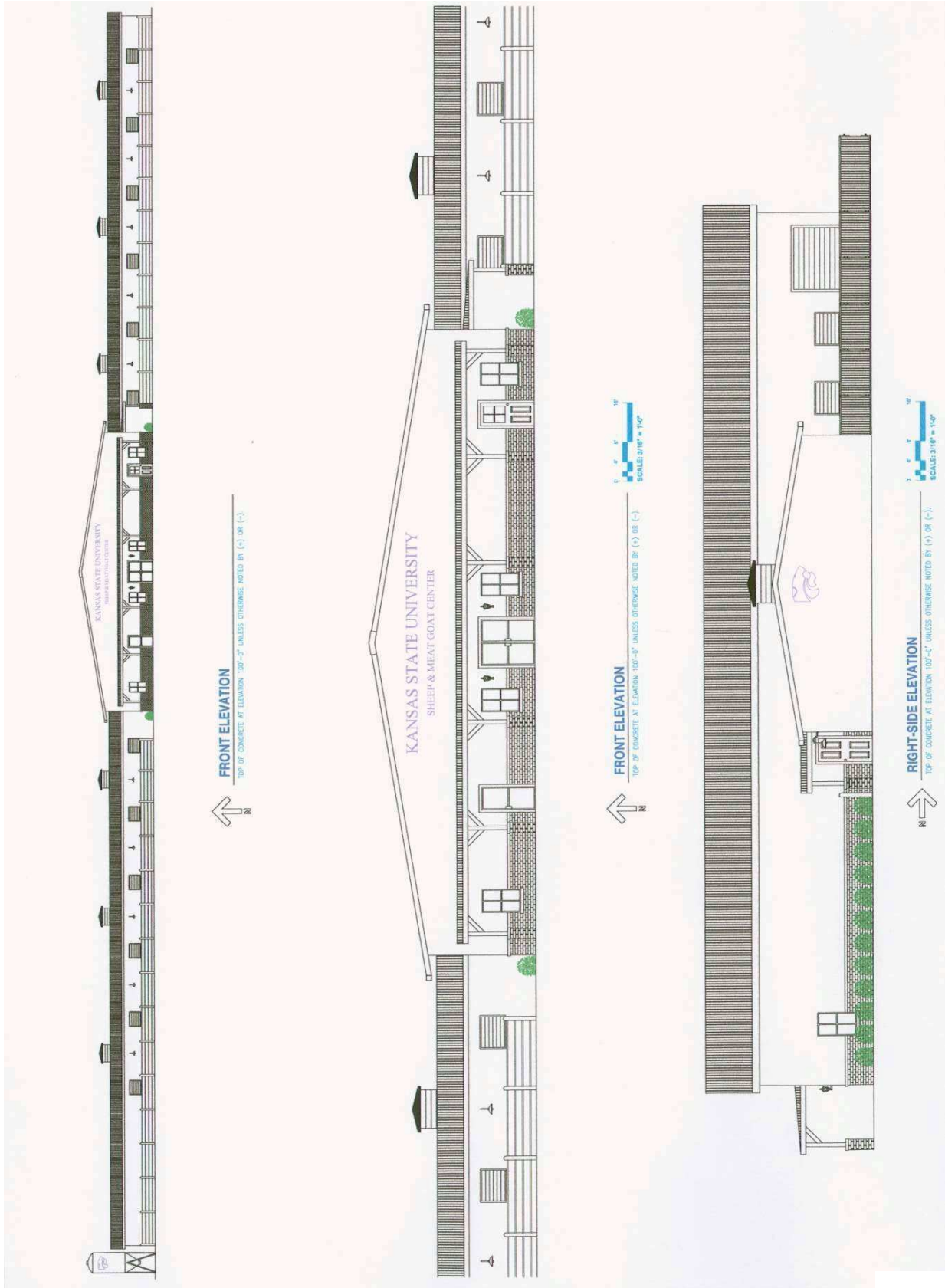
Hay Room – 35' x 30'

Large Equipment Room – 35' x 20'

With the large number of sheep/meat goats expected at this site, the Sheep and Meat Goat Center needs accommodations for hay and feed. Large equipment such as livestock trailers and tractors associated with this type of facility will be housed in this area.

Site Map





Funding

The Sheep and Meat Goat Center will be paid for with a combination of restricted fees from the sale of property to the KSU Foundation and private donations.

Budget

The estimated costs are:

Core Teaching and Research 9,600sf @ \$72/sf	\$691,200
Livestock Support 2,380 sf @ \$20/sf	47,600
Ten 20'x30' sheds @ \$30/sf	180,000
Ten animal pens for 30 animals (@40 sf/animal) @ \$15/sf	180,000
Four 10'x30' shed @ \$30/sf	36,000
Four animal pens for 15 animals (@40 sf/animal) @ \$15/sf	<u>36,000</u>
Subtotal	1,170,800
Site work	30,000
Utilities	20,000
Contingency (20%)	234,000
Fees (4.3%)	<u>50,000</u>
Total Project Cost	\$1,504,800

Maintenance

There will be no additional maintenance and upkeep funds requested from the state. This unit will be supported by revenue earned by the facility.

Timeline

Board of Regents Approval	January 2009
Legislative Authorization	June 2009
Architect/Engineer Selection	July 2009
Design/Construction Documents	August - October 2009
Construction	November 2009 - July 2010
Completion	August 2010